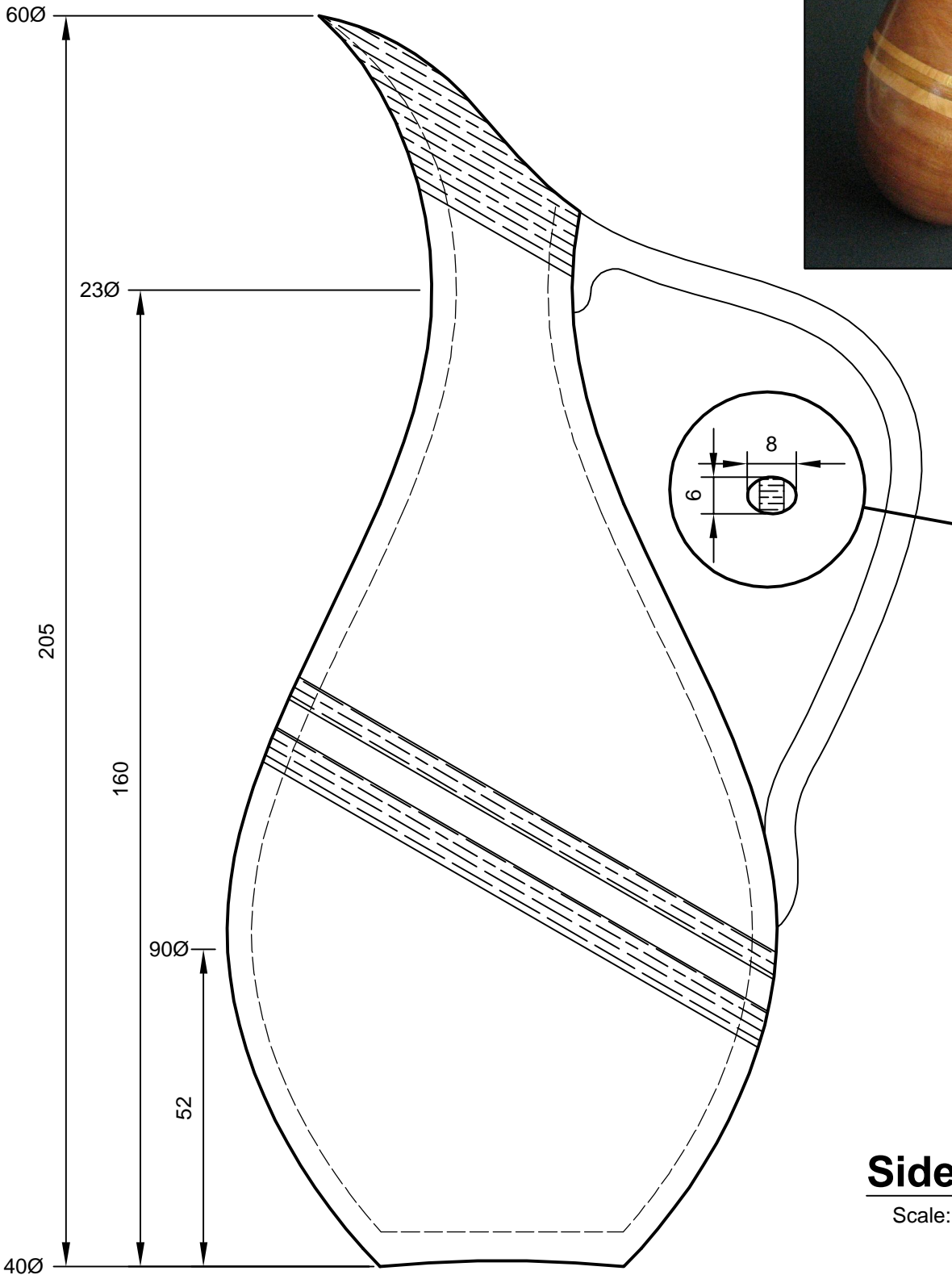
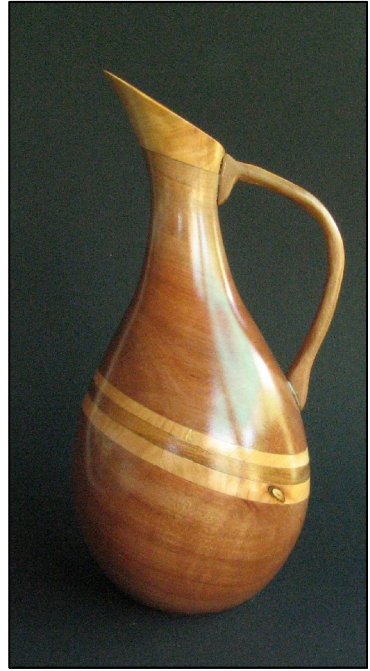


A EWER

As demonstrated by Eric Walker (897)



Side view

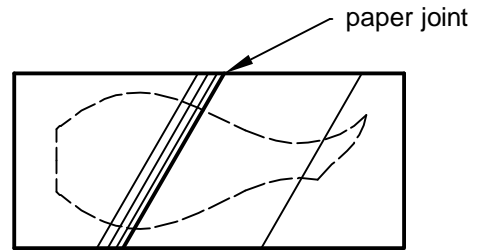
Scale: Full size

A EWER

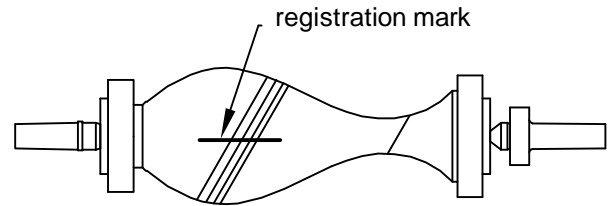
As demonstrated by Eric Walker (897)

Suggested Method of Work

1. Glue up a turning blank of appropriate size as shown. Use angled layers of contrasting timber with a paper joint at approximately the centre of the ewer to allow easy parting for later hollowing. Choose timber with fairly prominent grain. For best results have the grain of the layers run parallel to the glue lines. Use a good quality PVA or similar adhesive. Make sure the blank is long enough for a chucking spigot at each end.

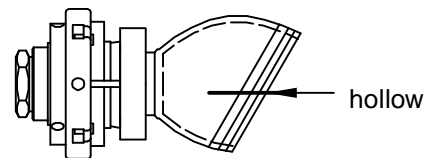


2. Mount the blank between centres and rough turn to shape allowing enough wood for later final shaping. Form a chucking spigot at each end.

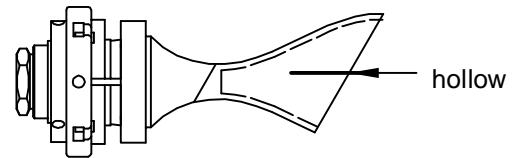


3. Draw a registration mark over the paper joint, and separate the top and bottom sections at the paper joint.

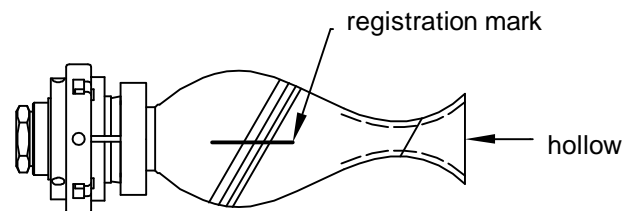
4. Mount the bottom and top sections in a chuck and hollow out. Hollow the top section up to the narrowest point of the neck. Take care as it is an angled surface and it is easy to get the wall too thin at one side.



5. Seal the inside surfaces .



6. Clean up the paper and glue joint and re-glue the two parts together making sure to align the registration mark. Refine the shape and clean up glue lines.



7. Mount in a chuck by the bottom end, remove the top end chucking spigot and hollow out the neck. Keep the wall thickness uniform up to where the spout begins and then taper down the thickness to form the pouring spout.

8. Refine the shape and form the pouring spout. Sand in preparation for finishing.

9. Part off and finish the base.

10. Laminate timber for the handle using three layers of the same contrasting timbers used for the body of the ewer. The grain of the central layer should be oriented at right angles to the outside layers to strengthen the handle.

11. Shape the handle, sand, and carefully glue it to the body.

12. Do any required final sanding and finish the ewer with your favourite finish. Don't forget to sign your masterpiece.