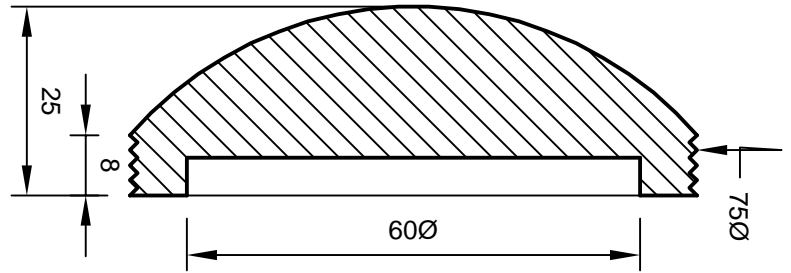


Front view

Scale: $\frac{1}{2}$ full size

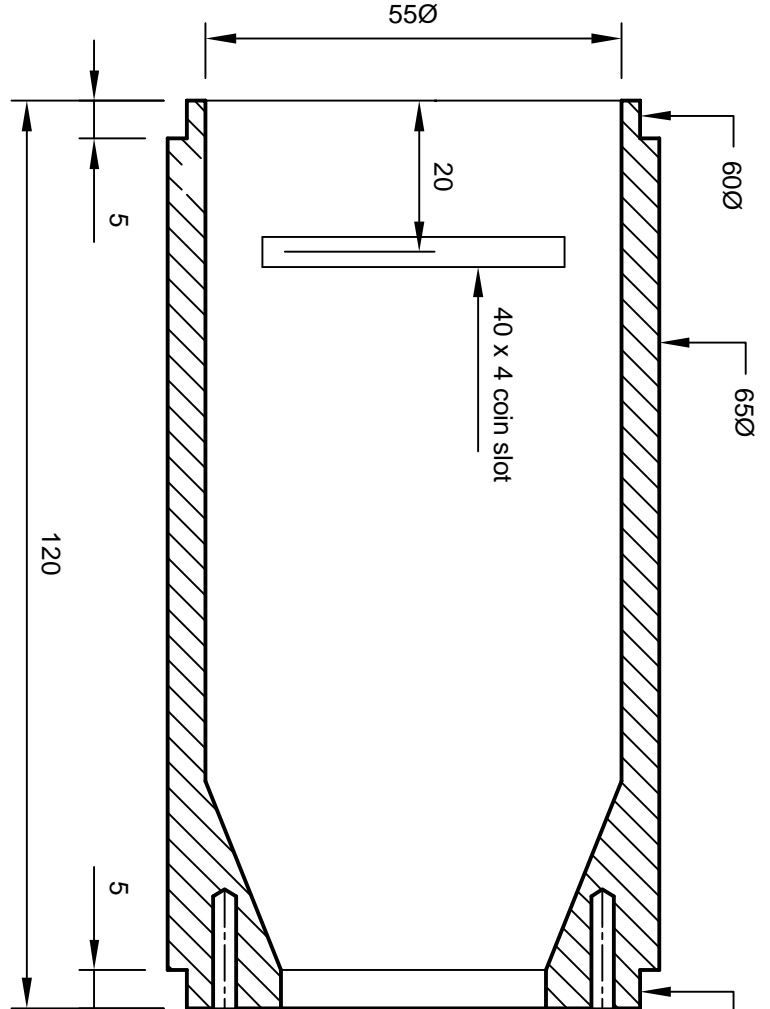
Top

Full size



Body

Full size



METHOD

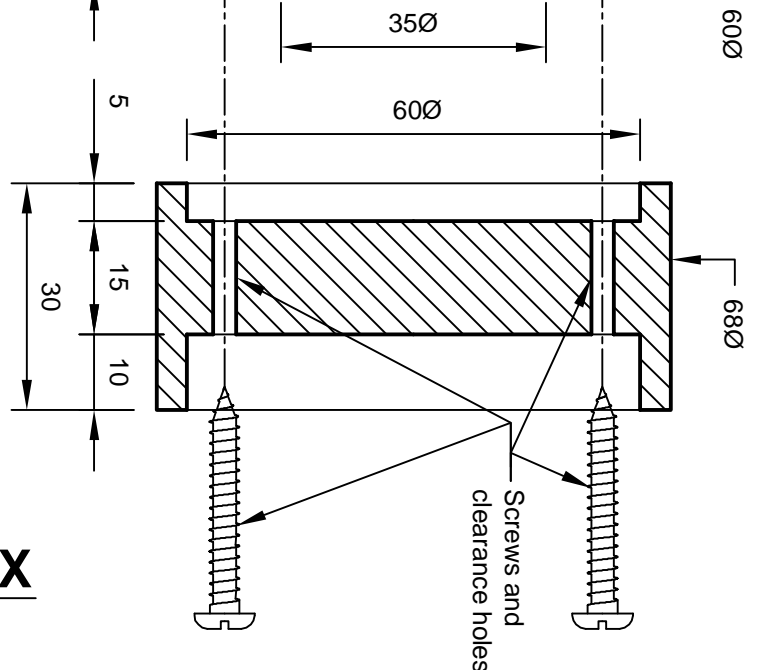
BODY: Turn timber blank to 120 x 65Ø cylinder. Turn 5mm spigot each end to 60Ø. Chuck & drill out from both ends to 35Ø. Enlarge to 55Ø as shown & thin near coin slot. Cut coin slot 40 wide (44 wide if measured on body curve) x 4.

TOP: Turn timber blank to 75Ø x 30 cylinder with 75Ø x 5 spigot on top. Mount in chuck & turn 5mm recess to fit top of body. Reverse chuck & turn dome shape to make a 25mm thick top. Cut about 3 or 4 'V' grooves in bottom 8mm.

BASE: Turn timber blank between centres to 68 x 30. Shape spigot about 40 x 5. Chuck and turn 5mm recess to fit bottom of body. Reverse & turn recess 60 x 10. Drill clearance holes for screws. Mark holes with index head. Fit base and drill pilot holes in body.

Base

Full size



POST BOX MONEY BOX

By courtesy of Eric Walker (897)