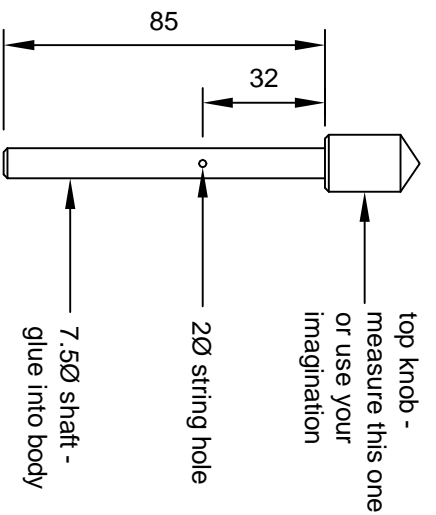


optional spent CD/DVD  
with personal decoration

## Shaft

Scale: 1/2 Full size

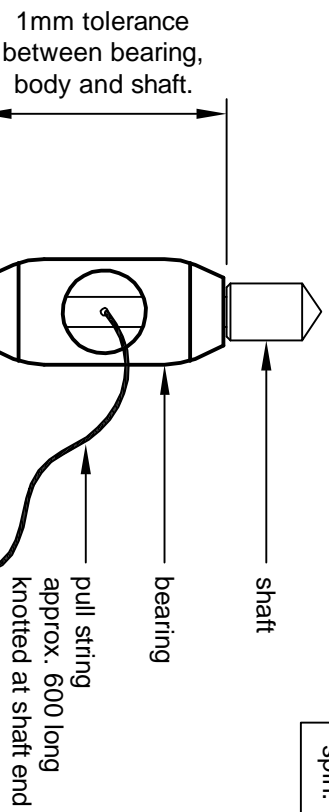
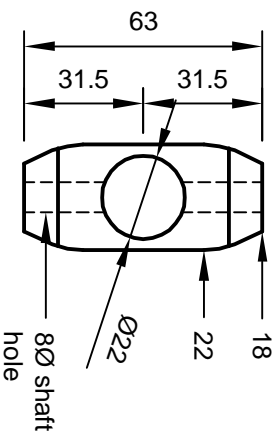


### To spin the top:

Wind the string onto the shaft. Hold the top in one hand by the bearing. Pull the string firmly with the other hand, letting go just before the string is fully unwound. Quickly set the top onto a firm even surface. The string will automatically rewind, ready for the next spin.

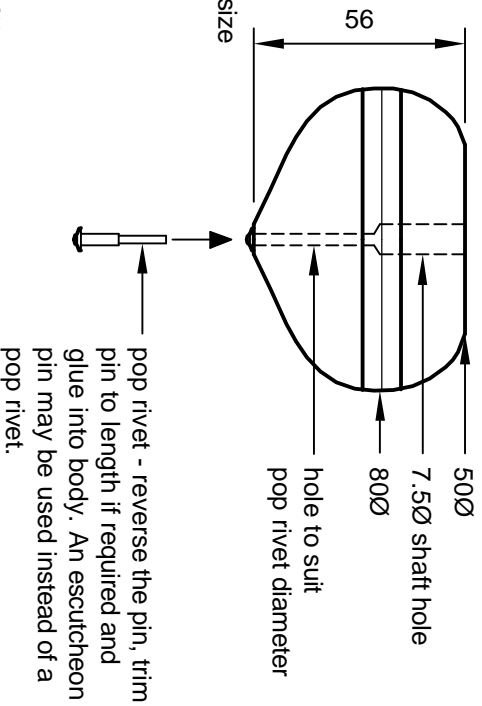
## Bearing

Scale: 1/2 Full size



## Body

Scale: 1/2 Full size



## STRING PULL SPINNING TOP

By courtesy of Gavin Wenham, Sydney