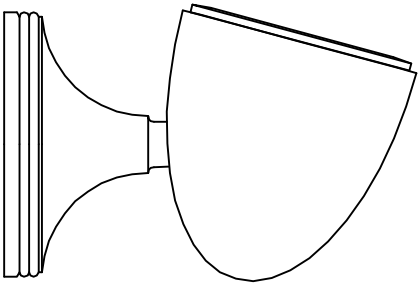


**Front View**

Scale: 1/2 full size

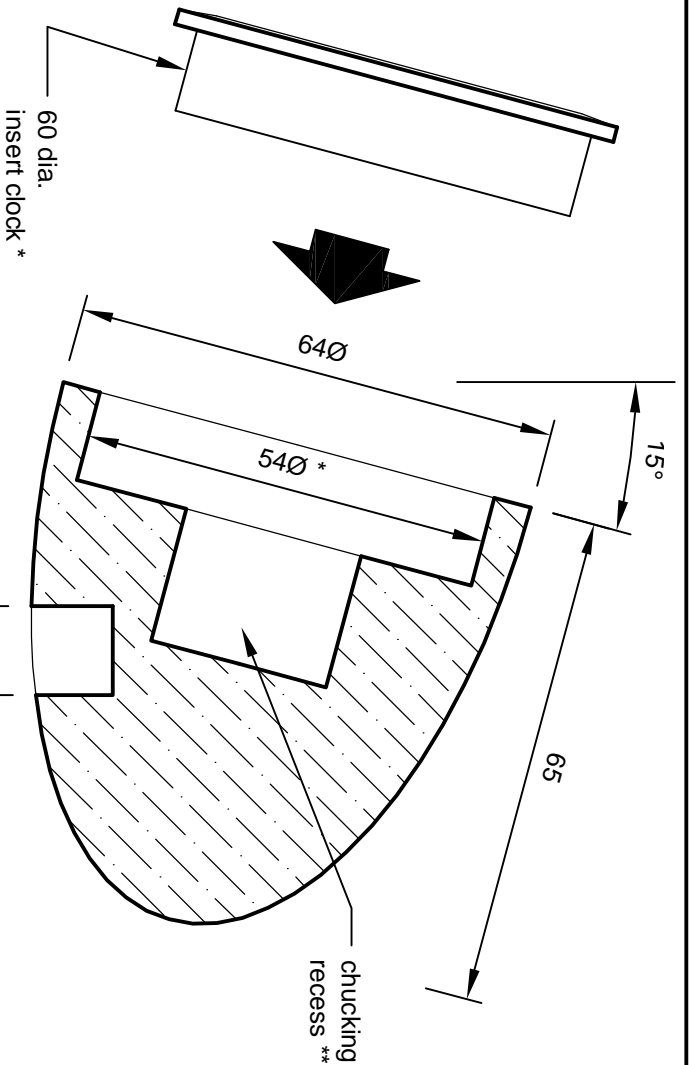


**Side View**

Scale: 1/2 full size

# DESK CLOCK

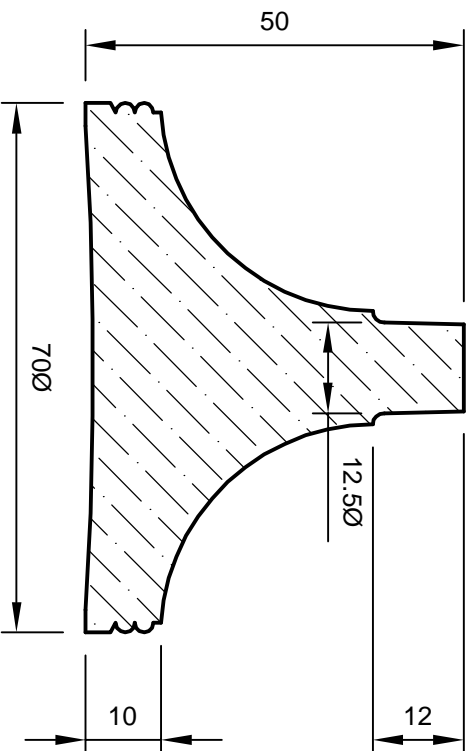
By courtesy of Noel Moyes (138)



**Body**

Scale: full size

**NOTES:**  
 \* Check the diameter of your clock insert before finalizing recess.  
 \*\* Diameter and depth to suit your chucking method.



**Base**

Scale: full size