

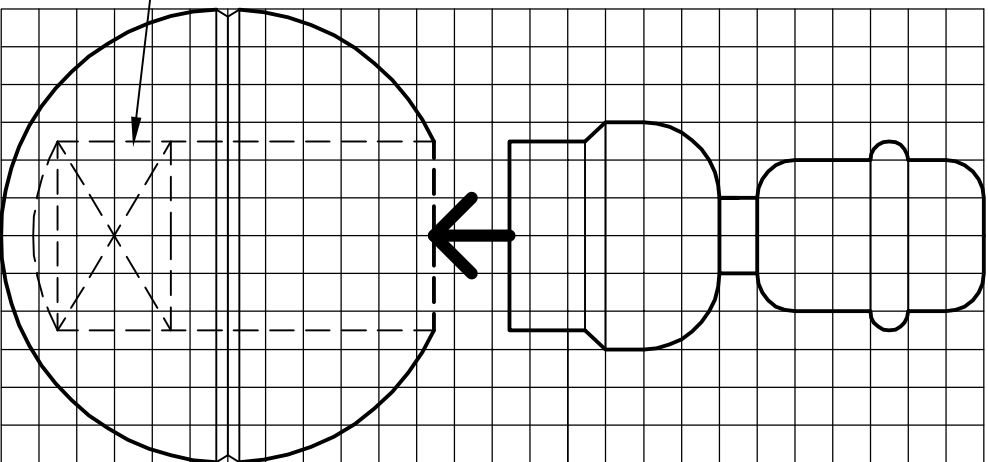
Front and Back Views (painting patterns)

TUMBLE DOLL

As demonstrated by John Attwater (2054)

Woodturners Association of Western Australia - Swan Woodturners Drawing Library - Drawing DL 049

heavy metal weight
as low as possible



Dimensions

- 5mm squares = 110mm doll height
- 6mm squares = 132mm doll height
- 7mm squares = 154mm doll height

1/4" squares = 5-1/2" doll height