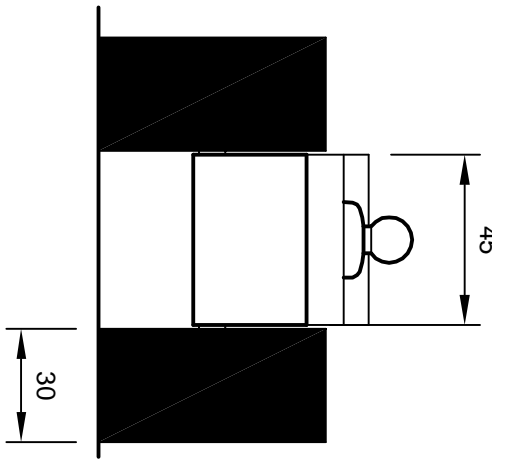
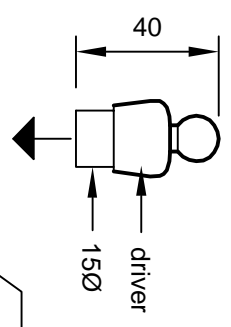


**Side view** Scale: 1/2 Full Size

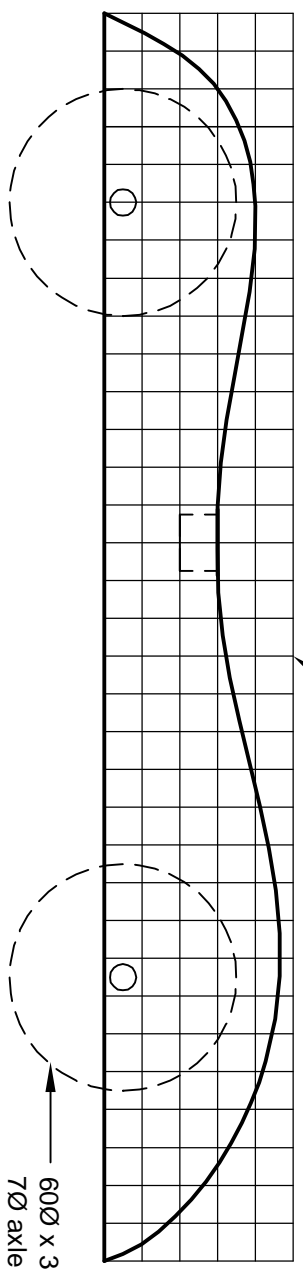
With care two car bodies can be cut from one piece of 90mm x 45mm pine



**Front view** Scale: 1/2 Full Size



10mm x 10mm squares



**Body Pattern** Scale: 1/2 Full Size

As this is a children's toy, please make sure that all materials, particularly finishes, are non-toxic.

# TOY RACING CAR (JH)

By courtesy of Jim Hanney